

Explanations of Model Predictions with `live` and `breakDown` Packages

by Mateusz Staniak and Przemysław Biecek

Abstract Complex models are commonly used in predictive modeling. In this paper we present R packages that can be used for explaining predictions from complex black box models and attributing parts of these predictions to input features. We introduce two new approaches and corresponding packages for such attribution, namely `live` and `breakDown`. We also compare their results with existing implementations of state-of-the-art solutions, namely, `lime` (Pedersen and Benesty, 2018) which implements *Locally Interpretable Model-agnostic Explanations* and `iml` (Molnar et al., 2018) which implements *Shapley values*.

Introduction

Predictive modeling is a very exciting field with a wide variety of applications. Lots of algorithms have been developed in this area. As proven in many Kaggle competitions (Fogg, 2016), winning solutions are often obtained with the use of elastic tools like random forest, gradient boosting or neural networks. Many of them are implemented by R packages found in the CRAN Task View *MachineLearning*.

These algorithms have many strengths but they also share a major weakness, which is a deficiency in interpretability of a model structure. A single random forest, an xgboost model or a neural network may be parameterized with thousands of parameters which make these models hard to understand. Lack of interpretability results in the lack of trust in model predictions. Lack of trust is a major obstacle when one thinks about applications in regulated areas such as personalized medicine or similar fields. An interesting example of a situation in which trust issues are fully justified is presented in Ribeiro et al. (2016). Authors compare two classifiers that were trained to recognize whether a text describes Christianity or Atheism. After explanations were provided, it turned out that the model with superior performance in the test set often based its prediction on irrelevant words, for example, prepositions. To overcome this problem, the interpretability of complex machine learning models has been a subject of much research, devoted partially also to model visualization (Štrumbelj and Kononenko, 2011; Tzeng and Ma, 2005; Zeiler and Fergus, 2014).

The general approach to interpretability is to identify important variables (features) in the model and then learn the expected model response for a single variable. A description of a general framework of permutation-based variable importance rankings may be found in Altmann et al. (2010). An interesting and widely adopted tool for estimation of marginal model response is *Partial Dependency Plot* (Friedman, 2001), that presents the marginal relationship between the variable of interest and a single variable from the model. An effective and very elastic implementation of this method is available in the `pdp` package (Greenwell, 2017). This method has many extensions such as for example *Individual Conditional Expectations* (Goldstein et al., 2015). The ICE method allows for tracing predictions for individual variables and it is very useful for the identification of interactions. On the other hand, ALE plots (Apley, 2016) were proposed as a superior tool for handling strongly correlated predictors by describing the conditional distribution of predicted values. This method can be used to assess both main effects and interactions between predictors. All these methods are focused on the effect of a single variable or small set of variables within the black box model.

A different approach is presented by Ribeiro et al. (2016). While methods such as PDP and ALE plot aim to describe model behavior globally, it is also possible to explain individual predictions as in ICE. We will focus on such methods. The authors propose LIME (*Locally Interpretable Model agnostic Explanations*) as a method for explaining black box predictions by fitting an interpretable model locally around a prediction of interest. This methodology was illustrated with examples from image and text classification areas. Later, it was extended by Puri et al. (2017) to MAGIX methodology (*Model Agnostic Globally Interpretable Explanations*) and modified by the authors of the original article to aLIME (*anchor-LIME*) by Tulio Ribeiro et al. (2016).

So far, two implementations of the method have been found. Python library was developed by the authors of the original article and it is available on GitHub at <https://github.com/marcotcr/lime>. It works for any text or image classifier as well as for tabular data. Regression models can be explained using simple linear regression. The R package `lime` is a port to the original Python package. This package works with tabular and text data and handles all models supported by either `caret` (Kuhn, 2018) or `mlr` (Bischl et al., 2016) package and it can be easily extended to work with other models. An implementation of the *sp-LIME* algorithm proposed in the original article to choose representative observations that would explain the behavior of the model globally is available for Python.

In addition to packages that implement single methods, in R we have also two packages with a consistent collection of explainers: **DALEX** (Biecek, 2018) and **iml**.

In this article, we give a short overview of methods for explaining predictions made by complex models. We also introduce two new methods implemented in R packages **live** and **breakDown**. Examples presented in this paper were recorded with the **archivist** package (Biecek and Kosinski, 2017). They can be accessed and restored with a single R instruction listed in footnotes.

Related work

In this section we present two of the most recognized methods for explanations of a single prediction from a complex black box model (so-called instance-level explanations).

Locally Interpretable Model-agnostic Explanations (LIME)

Ribeiro et al. (2016) proposed **LIME** method for explaining prediction for a single observation. The algorithm is designed to explain predictions of any classifier and it works primarily for image and text data. First, original observation of interest is transformed into simplified input space of binary vectors (for example presence or absence of words). Then a dataset of similar observations is created by sampling features that are present in the representation of the explained instance. The closeness of these observations to the original observations is measured via a specified similarity kernel. This distance is taken into account while the explanation model is fitted to the new dataset. The interpretable model can be penalized to assure that it does not become too complex itself. In mathematical terms, LIME explanation for observation x is a model g which approximates complex model f by solving the following optimization problem

$$g(\cdot) = \arg \min_{h \in G} \left[\mathcal{L}(f, h, \pi_x(z)) + \Omega(h) \right],$$

where z is the interpretable (binary) representation of x , $\pi_x(z)$ is a measure of closeness of z and x (the kernel), \mathcal{L} is a loss function that measures local faithfulness of the explanation and Ω is a model complexity measure, that serves as a regularization term.

Shapley values (SHAP)

In 2017 Lundberg and Lee (2017) introduced a general framework for explaining machine learning models that encompasses LIME among other methods. The method is associated with some specific visualization techniques that present how predictors contribute to the predicted values. In this framework, observations are transformed into the space of binary variables called simplified inputs. Explanation models are restricted to the so-called **additive feature attributions methods**, what means that values predicted by the explanation model are linear combinations of these binary input vectors. Formally, if $z = (z_1, \dots, z_p)$ is a binary vector in simplified inputs space and g is the explanation model, then

$$g(z) = \phi_0 + \sum_{j=1}^M \phi_j z_j,$$

where $\phi_j, j = 0, \dots, M$ are weights. These weights measure how each feature contributes to the prediction. Authors prove that in this class of explanation models **Shapley values** provide unique solutions to the problem of finding optimal weights ϕ_j that assure that the model has desirable properties of local accuracy and consistency. For formal treatment and examples, please refer to the original article of Lundberg and Lee (2017). In particular, you will find there a proof that for certain choices of parameters in the LIME method, coefficients of the fitted local linear model are Shapley values. The Python implementation of this method is available at <https://github.com/slundberg/shap>. In R *Shapley values* can be found in few packages. For tree based models they are implemented in **xgboost** package (Chen et al., 2018). An independent model agnostic implementation is available in the **iml** package. A development version of a package dedicated entirely to Shapley values can be found at <https://github.com/redichh/ShapleyR>.

Local Interpretable Visual Explanations (LIVE)

The next two sections introduce two new approaches to explaining model prediction, implemented in R packages **live** and **breakDown**, respectively. Both of these methods describe locally (at an instance

level) how features contribute to a model prediction.

Motivation

live is an alternative implementation of LIME for regression problems, which emphasizes the role of model visualization in the understanding of complex models. In comparison with the original LIME, both the method of local exploration and handling of interpretable inputs are changed. A dataset for local exploration is simulated by perturbing the explained instance one feature at a time. The process is described in section 54.3.2. By default, the Gaussian kernel is used to measure distances between simulated observation and the observation of interest, but other kernels can also be used, too. Original variables are used as interpretable inputs, so numerical features are used in the explanation model. Interpretability of the local explanation comes from a tractable relationship between inputs and the predicted response. Variable selection is optional for linear regression when sparsity is required.

One of the main purposes of **live** is to provide tools for model visualization, which is why in this package emphasis is put on models that are easy to visualize. For linear models, waterfall plots can be drawn to present how predictors contribute to the overall model score for a given prediction, while forest plots (Kennedy, 2017) can be drawn to summarize the structure of local linear approximation. Examples clarifying both techniques are given in section 54.5. Other interpretable models that are equipped with generic plot function can be visualized, too. In particular, decision trees which can be plotted using **party** package (Strobl et al., 2008) are well suited for this task, as they can help discover interactions. An example is given in section 54.5. The package uses the **mlr** interface to handle machine learning algorithms, hence any classifier or regression method supported by **mlr** can be used as an interpretable model, though in practice simple models will be preferred. The most common choice is a sparse linear model.

Methodology

live package uses a two-step procedure to explain prediction of a selected black box model in the point x . First, an artificial dataset X' is created around point x . Then, the white box model is fitted to the model predictions for points in X' .

The first step is described by the Algorithm 1.

- 1: $p \leftarrow$ number of predictors
- 2: $m \leftarrow$ number of observations to generate
- 3: Duplicate the given observation m times
- 4: **for** i in $\{1, \dots, m\}$ **do**
- 5: Draw number $k \in \{1, \dots, p\}$ uniformly. Replace the value of k -th variable in i -th duplicate with a random draw from the empirical distribution of this variable in the original dataset
- 6: **end for**

Algorithm 2: Simulating X' - surroundings around the selected x .

In other words, the procedure amounts to iterating over the set of m observations identical to a given instance and changing the value of one random variable at each step. Alternatively, in **live** package new dataset can be sampled from a multivariate normal distribution and using permutations of each column. Details can be found in the manual. Current implementation of this algorithm relies on **data.table** package for performance (Dowle and Srinivasan, 2017). The choice of the number of instances to sample is an open problem both in LIME and LIVE methods.

Model agnostic greedy explanations of model predictions (breakDown)

Motivation

live package approximates the local structure of the black box model around a single point in the feature space. The idea behind the **breakDown** is different. In the case of that package, the main goal is to decompose model predictions into parts that can be attributed to particular variables. It is straightforward for linear (and more generally: additive) models. Below we present a model agnostic approach that works also for nonlinear models.

Let us use the following notation: $x = (x_1, x_2, \dots, x_p) \in X \subset \mathcal{R}^p$ is a vector in feature space X . $f : X \rightarrow \mathcal{R}$ is a scoring function for the model under consideration, that may be used for regression of

classification problems. X^{train} is a training dataset with n observations.

For a single observation x^{new} the model prediction is equal to $f(x^{new})$. Our goal is to attribute parts of this score to variables (dimensions) in the X space.

The lm-break: version for additive models

For linear models (and also generalized linear models) the scoring function (e.g. link function) may be expressed as a linear combination of feature vectors.

$$f(x^{new}) = (1, x^{new})(\mu, \beta)^T = \mu + x_1^{new} \beta_1 + \dots + x_p^{new} \beta_p. \tag{1}$$

In this case it is easy to attribute the impact of feature x_i to prediction $f(x^{new})$. The most straightforward approach would be to use the $x_i^{new} \beta_i$ as the attribution. However, it is easier to interpret variable attributions if they are invariant to scale-location transformations of x_i , such as change of the units or origin. Centering addresses location changes and scaling also changes the scales of β parameters. This is why for linear models the **lm-break** variable attributions are defined as $(x_i^{new} - \bar{x}_i) \beta_i$. The equation 1 may be rewritten as follows:

$$f(x^{new}) = (1, x^{new})(\mu, \beta)^T = baseline + (x_1^{new} - \bar{x}_1) \beta_1 + \dots + (x_p^{new} - \bar{x}_p) \beta_p \tag{2}$$

where

$$baseline = \mu + \bar{x}_1 \beta_1 + \dots + \bar{x}_p \beta_p.$$

Components $(x_i^{new} - \bar{x}_i) \beta_i$ are all expressed in the same units. For **lm** and **glm** models these values are calculated and plotted by the generic `broken()` function from the **breakDown** package.

The ag-break: model agnostic approach

Interpretation of **lm-break** attributions is straightforward but limited only to additive models. In this section, we present an extension for non-additive models. This extension uses additive attributions to explain predictions from non-additive models thus some information about the model structure will be lost. Still, for many models, such attribution may be useful. For additive models the **ag-break** approach gives the same results as **lm-break** approach.

The intuition behind **ag-break** approach is to identify components of x^{new} that cannot be changed without a significant change in the prediction $f(x^{new})$. In order to present this approach in a more formal way, we first need to introduce some definitions.

Definition 54.4.1 (Relaxed model prediction). Let $f^{IndSet}(x^{new})$ denote an expected model prediction for x^{new} relaxed on the set of indexes $IndSet \subset \{1, \dots, p\}$.

$$f^{IndSet}(x^{new}) = E[f(x) | x_{IndSet} = x_{IndSet}^{new}]. \tag{3}$$

Thus $f^{IndSet}(x^{new})$ is an expected value for model response conditioned on variables from set $IndSet$ in such a way, that $\forall_{i \in IndSet} x_i = x_i^{new}$.

The intuition behind relaxed prediction is that we are interested in an average model response for observations that are equal to x^{new} for features from $IndSet^C$ set and follow the population distribution for features from $IndSet$ set. Clearly, two extreme cases are

$$f^{\{1, \dots, p\}}(x^{new}) = f(x^{new}), \tag{4}$$

which is the case of no relaxation, and

$$f^{\emptyset}(x^{new}) = E[f(x)]. \tag{5}$$

which corresponds to full relaxation. We will say that a variable was relaxed when we do not fix its value and we let it follow the population distribution. This will play a crucial part in the algorithm presented in this section.

Since we do not know the joint distribution of x , we will use its estimate instead.

$$f^{IndSet}(\widehat{x^{new}}) = \frac{1}{n} \sum_{i=1}^n f(x_{-IndSet}^i, x_{IndSet}^{new}). \tag{6}$$

We will omit the dashes to simplify the notation.

Definition 54.4.2 (Distance to relaxed model prediction). Let us define the distance between model prediction and relaxed model prediction for a set of indexes $IndSet$.

$$d(x^{new}, IndSet) := |f^{IndSet}(x^{new}) - f(x^{new})|. \quad (7)$$

It is the difference between model prediction for observation x^{new} and observation relaxed on features $indSet$. The smaller the difference, the less important are variables in the $indSet$ set.

Definition 54.4.3 (Added feature contribution). For j -th feature we define its contribution relative to a set of indexes $IndSet$ (added contribution) as

$$\text{contribution}^{IndSet}(j) = f^{IndSet \cup \{j\}}(x^{new}) - f^{IndSet}(x^{new}). \quad (8)$$

It is the change in model prediction for x^{new} after relaxation on j .

The model agnostic feature contribution is based on distances to relaxed model predictions. In this approach, we look for a series of variables that can be relaxed in such a way so as to move model prediction from $f(x^{new})$ to a fully relaxed prediction $E[f(x)]$ (expected value for all model predictions). The order of features in this series is important. But here we use a greedy strategy in which we add features to the $indSet$ iteratively (one feature per iteration) and minimize locally the distance to relaxed model prediction.

This approach can be seen as an approximation of Shapley values where feature contribution is linked with the average effect of a feature across all possible relaxations. These approaches are identical for additive models. For non-additive models, the additive attribution is just an approximation in both cases, yet the greedy strategy produces explanations that are easier to interpret. It is worth noting that similar decomposition of predictions and measures of contribution for classifiers have been examined in [Robnik-Sikonja and Kononenko \(2008\)](#).

The greedy search can start from a null set of indexes (then in each step a single feature is being relaxed) or it can start from a full set of relaxed features (then in each step a single feature is removed from the set). The above approaches are called *step-up* and *step-down*, respectively. They are presented in algorithms 3 and 4.

The algorithm 3 presents the procedure that generates a sequence of variables with increasing contributions. This sequence corresponds to variables that can be relaxed in such a way so as to minimize the distance to the original prediction. The resulting sequence of *Contributions* and *Variables* may be plotted with Break Down Plots, see an example in Figure 2. Figure 1 summarizes the idea behind algorithm 3. By relaxing consecutive variables one finds a path between single prediction and average model prediction.

One can also consider an opposite strategy - instead of starting from $IndSet = \{1, \dots, p\}$ one can start with $IndSet = \emptyset$. That strategy is called *step-up* approach and it is presented in Algorithm 4.

Note that the Break Down method is also available for Python in the `pyBreakDown` library.¹

- 1: $p \leftarrow$ number of variables
- 2: $IndSet \leftarrow \{1, \dots, p\}$ set of indexes of all variables
- 3: **for** i in $\{1, \dots, p\}$ **do**
- 4: Find new variable that can be relaxed with small loss in relaxed distance to $f(x^{new})$
- 5: **for** j in $IndSet$ **do**
- 6: Calculate relaxed distance with j removed
- 7: $dist(j) \leftarrow d(x^{new}, IndSet \setminus \{j\})$
- 8: **end for**
- 9: Find and remove j that minimizes loss
- 10: $j_{min} \leftarrow \arg \min_j dist(j)$
- 11: $Contribution^{IndSet}(i) \leftarrow f^{IndSet}(x^{new}) - f^{IndSet \setminus \{j_{min}\}}(x^{new})$
- 12: $Variables(i) \leftarrow j_{min}$
- 13: $IndSet \leftarrow IndSet \setminus \{j_{min}\}$
- 14: **end for**

Algorithm 3: Model agnostic break down of model predictions. The *step-down* approach.

¹<https://github.com/MI2DataLab/pyBreakDown/>

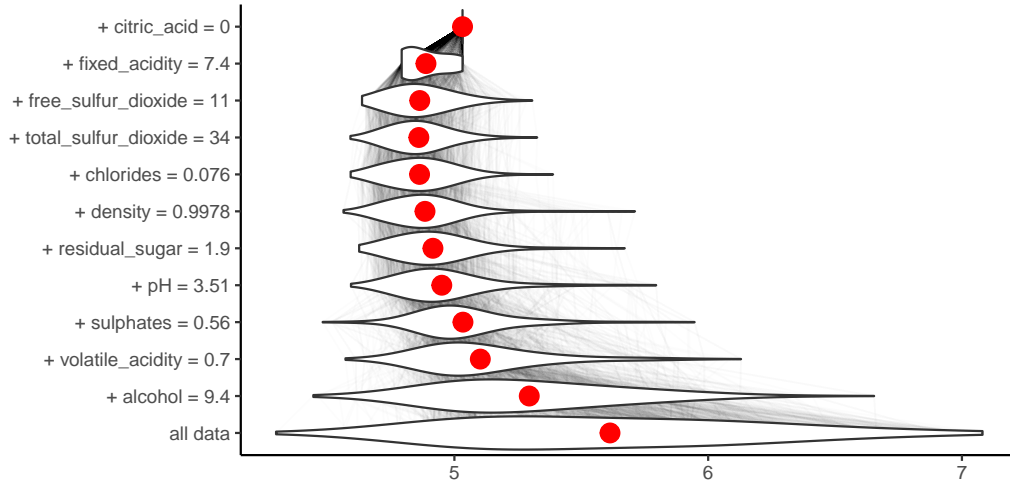


Figure 1: An illustration of algorithm 3. Each row in this plot correspond to a distribution of model scores $f(x)|x_{IndSet} = x_{IndSet}^{new}$ for different sets of $IndSet$ indexes. Initially $IndSet = \{1, \dots, p\}$ and in each step single variable is removed from this set. Labels on the left-hand side of the plots show which variable is removed in a given step. Red dots stand for conditional average - an estimate of relaxed predictions $f^{IndSet}(x^{new})$. Violin plots summarize conditional distributions of scores while gray lines show how model predictions change for particular observations between consecutive relaxations. This plot is based on wine dataset described in section 54.5.

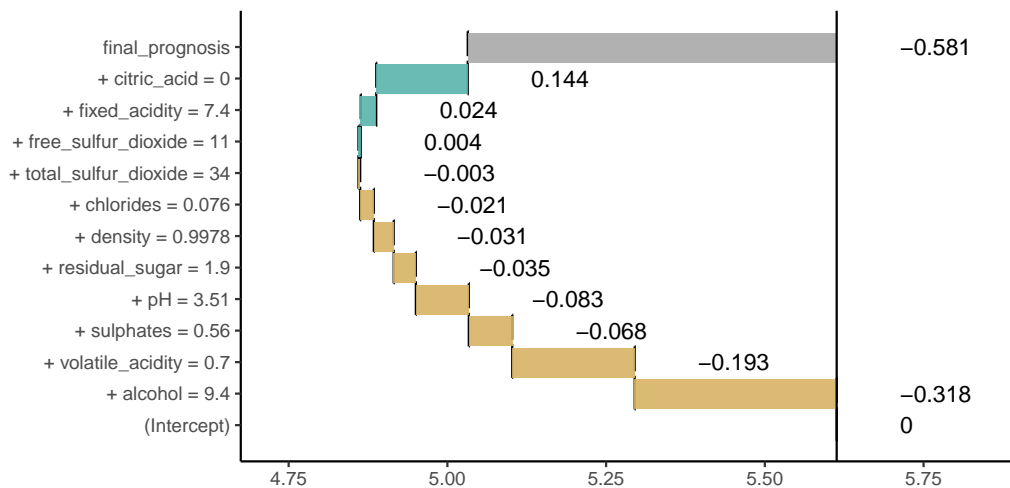


Figure 2: Break Down Plot for decomposition identified in Figure 1. Beginning and end of each rectangle corresponds to relaxed prediction (red dot in Figure 1) with and without a particular feature. This plot is based on wine dataset described in section 54.5.


```

1:  $p \leftarrow$  number of variables
2:  $IndSet \leftarrow \emptyset$  empty set
3: for  $i$  in  $\{1, \dots, p\}$  do
4:   Find new variable that can be relaxed with large distance to  $f^\emptyset(x^{new})$ 
5:   for  $j$  in  $\{1, \dots, p\} \setminus IndSet$  do
6:     Calculate relaxed distance with  $j$  added
7:      $dist(j) \leftarrow d(x^{new}, IndSet \cup \{j\})$ 
8:   end for
9:   Find and add  $j$  that maximize distance
10:   $j_{max} \leftarrow \arg \max_j dist(j)$ 
11:   $Contribution^{IndSet}(i) \leftarrow f^{IndSet \cup \{j_{max}\}}(x^{new}) - f^{IndSet}(x^{new})$ 
12:   $Variables(i) \leftarrow j_{max}$ 
13:   $IndSet \leftarrow IndSet \cup \{j_{max}\}$ 
14: end for

```

Algorithm 4: Model agnostic break down of model predictions. The *step-up* approach.

Case study: How good is this red wine?

Wine quality data (Cortez et al., 2009) is a well-known dataset which is commonly used as an example in predictive modeling. The main objective associated with this dataset is to predict the quality of some variants of Portuguese *Vinho Verde* on the basis of 11 chemical properties. A single observation from the dataset can be found in Table 1. According to the results from the original article, the Support Vector Machine (SVM) model performs better than other models including linear regression, neural networks and others.

In this section we will show how **live** package can be used to fit linear regression model locally and generate a visual explanation for the black box model as well as how **breakDown** package can be used to attribute parts of the final prediction to particular features. This example will focus on a regression problem, but since both methods are supposed to be model-agnostic, classification problems are treated in the same way by using scores (probabilities) rather than predicted classes.

fixed acidity	volatile acidity	citric acid	res. sugar	Cl ⁻	free SO ₂	total SO ₂	D	pH	SO ₄ ²⁻	alcohol
7.40	0.70	0.00	1.90	0.08	11.00	34.00	1.00	3.51	0.56	9.40

Table 1: The fifth observation in wine quality dataset. D denotes density, Cl⁻ stands for chlorides, "res." for residual and SO₄²⁻ for sulphates.

The SVM model² used in this example is trained with the use of **e1071** package (Meyer et al., 2018). We do not perform hyperparameter's tuning as the model performance is not relevant in this use-case.

```

library("e1071")
data(wine, package = "live")
wine_svm_model <- svm(quality~., data = wine)

```

Different approaches for explaining single predictions are illustrated on the basis of the prediction for the fifth wine from this dataset, the one presented in table 1. The actual quality of this wine is 5, while the quality predicted by the SVM model is 5.03.

```

predict(wine_svm_model, wine[5, ])
##          1
## 5.032032

```

The live package

The **live** package approximates black box model (here SVM model) with a simpler white box model (here linear regression model) to explain the local structure of a black box model and in consequence to assess how features contribute to a single prediction.

To do this, we first need to generate artificial observations around the selected observation x^{new} for local exploration. We use `sample_locally` function from **live** package.

²Access this model with `archivist::aread("MI2DataLab/live/arepo/1025d")`

```
library("live")
library("mlr")
wine_sim <- sample_locally(data = wine,
                          explained_instance = wine[5, ],
                          explained_var = "quality",
                          size = 2000,
                          seed = 17)
wine_sim_svm <- add_predictions(wine_sim, wine_svm)
nc <- which(colnames(wine) == "quality")
```

If multiple models are to be explained, there is no need to generate multiple *artificial* datasets. Predictions of each model on a single simulated dataset can be added with the use of `add_predictions` function. A different object should be created for each model, but the same result of a call to `sample_locally` function should be used as the `to_explain` argument. Black box model can be passed as a model object or as a name of `mlr` learner. While the object created by `sample_locally` function stores the dataset, name of the response variable and other metadata, the object returned by `add_predictions` function also stores the fitted black box model. The result of applying `sample_locally` functions does not contain the response but the result of `add_predictions` contains a column with model predictions, which has the same name as the response in the original dataset. The seed argument is passed to `set.seed` function to ensure reproducibility, though our experience with this approach shows that the results are stable.

Once the artificial data points around x^{new} are generated, we may fit the white box model to them. In this example we fit a linear regression model using `fit_explanation` function³.

```
wine_expl_live <- fit_explanation(wine_sim_svm)
```

This function returns a native `mlr` object. The model object (for example, `lm` object) can be extracted with the use of `getLearnerModel` function.

The white box model `wine_expl` approximates the black box model `wine_svm_model` around x^{new} . Coefficients of this model can be presented graphically with the generic `plot` function for class `live_explainer`. See the corresponding Forest Plot in Figure 3 and the corresponding Waterfall Plot in Figure 4.

```
plot(wine_expl, type = "forest")
plot(wine_expl, type = "waterfall")
```

In case of datasets with larger number of variables, we could obtain sparse results by setting `selection = TRUE` in the `fit_explanation` function. This option allows for performance of variable selection based on LASSO implemented in `glmnet` (Friedman et al., 2010; Simon et al., 2011). When using Generalized Linear Model or Elastic Net as a white box model it is possible to set family argument to one of the distribution families available in `glm` and `glmnet` functions via `response_family` argument to `fit_explanation`.

As mentioned, other interpretable models are suitable as local explanations, too. In particular, decision trees can be used to visualization interactions between variables. It is enough to select a different white box model while calling `fit_explanation` function.

```
wine_expl_tree <- fit_explanation(wine_sim_svm, "regr.ctree", kernel = identity_kernel,
                              hyperpars = list(maxdepth = 2))
```

Kernel is set to identity, because trees built by `party` package cannot handle non-integer weights. The result is the following decision tree in Figure 5.

The lime package

The LIME method is implemented in the R package `lime`. It produces sparse explanations by default. In the first step a `lime` object is created for a specified dataset and a fitted black box model.

```
library("lime")
set.seed(17)
wine_expl_lime <- lime(wine[5, ], wine_svm_model)
```

Then we use the `explain` function, which in case of regression takes the observation of interest, `lime` object and the number of top features to be used for explanation⁴. In this case data is low dimensional, hence we can use all predictors. Alternatively, we could set `feature_select` to `none` to skip the selection part.

³Access this model with `archivist::aread("MI2DataLab/live/arepo/eebe6")`

⁴Access this object with `archivist::aread("MI2DataLab/live/arepo/878d5")`

Variable	N	Estimate		p
fixed_acidity	2000	█	0.14 (0.14, 0.15)	<0.001
volatile_acidity	2000	█	-1.43 (-1.46, -1.40)	<0.001
citric_acid	2000	█	-0.66 (-0.69, -0.63)	<0.001
residual_sugar	2000	█	0.00 (-0.00, 0.01)	0.9
chlorides	2000	█	-2.57 (-2.71, -2.43)	<0.001
free_sulfur_dioxide	2000	█	0.00 (0.00, 0.00)	<0.001
total_sulfur_dioxide	2000	█	0.00 (0.00, 0.00)	<0.001
density	2000	█	-25.69 (-28.09, -23.30)	<0.001
pH	2000	█	-0.82 (-0.85, -0.79)	<0.001
sulphates	2000	█	2.56 (2.53, 2.60)	<0.001
alcohol	2000	█	0.20 (0.19, 0.20)	<0.001
(Intercept)		█	30.32 (27.93, 32.71)	<0.001

Figure 3: Forest plot for a linear white box model that approximates the black box model.

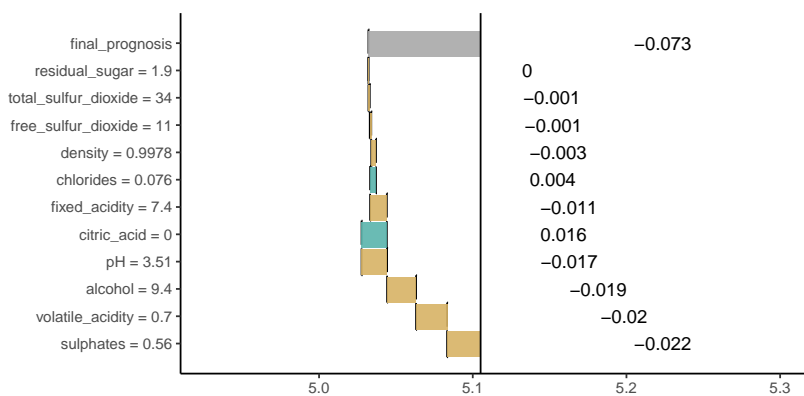


Figure 4: Waterfall plot for additive components of linear model that approximates the black box model around x^{new} .

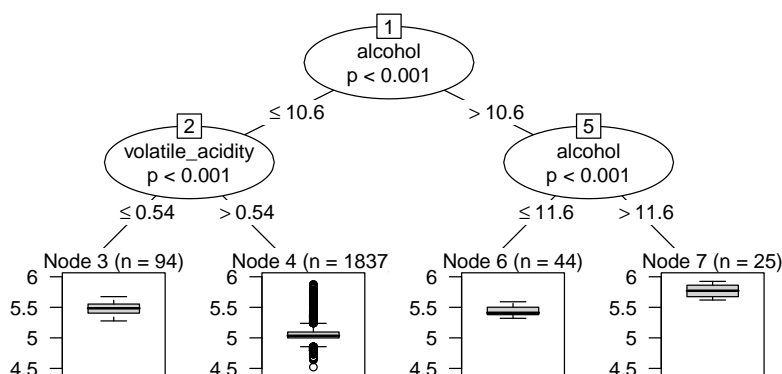


Figure 5: Decision tree that approximates the black box model around x^{new} .

```

model_type.svm <- function(x, ...) "regression"
svm_explained <- explain(wine[5, ], wine_expl_lime, n_features = 11)
plot_explanation(svm_explained)

```

Results produced by the `plot_explanation` function are presented in Figure 6.

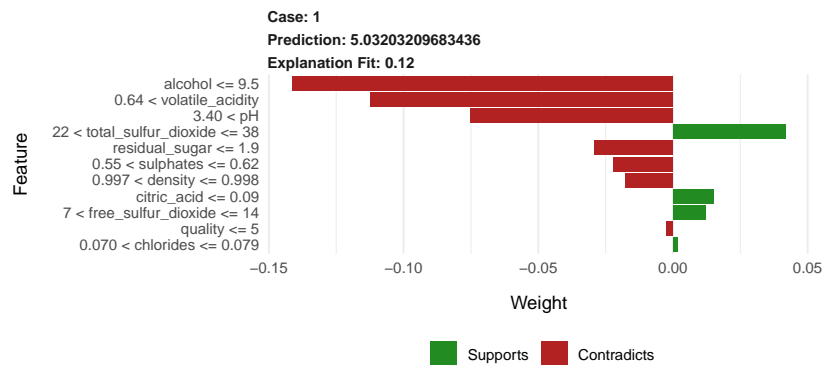


Figure 6: Contributions of particular features to the prediction calculated with SVM model assessed with LIME method.

Note that here, the explanation is presented in terms of discretized variables rather than original continuous predictors.

The `breakDown` package

The `breakDown` package directly calculates variable attributions for a selected observation. It does not use any surrogate model.

The `broken()` function is used to calculate feature attributions⁵. Generic functions `print()` and `plot()` show feature attributions as texts or waterfall plots. The `baseline` argument specifies the origin of a waterfall plot. By default, it is 0. Use `baseline = "intercept"` to set the origin to average model prediction.

```

library("breakDown")
explain_bd <- broken(wine_svm, new_observation = wine[5, -nc],
                    data = wine[, -nc],
                    baseline = "Intercept",
                    keep_distributions = TRUE)

```

```

explain_bd
##                contribution
## baseline                5.613
## + alcohol = 9.4         -0.318
## + volatile_acidity = 0.7 -0.193
## + sulphates = 0.56     -0.068
## + pH = 3.51            -0.083
## + residual_sugar = 1.9 -0.035
## + density = 0.9978     -0.031
## + chlorides = 0.076    -0.021
## + total_sulfur_dioxide = 34 -0.003
## + quality = 5           0.000
## + free_sulfur_dioxide = 11 0.004
## + fixed_acidity = 7.4     0.024
## + citric_acid = 0        0.144
## final_prognosis        5.032

```

```
plot(explain_bd)
```

Figure 7 shows variable contributions for step-up and step-down strategy. Variable ordering is different but the contributions are consistent across both strategies.

⁵Access example attributions with `archivist::aread("MI2DataLab/live/arepo/1f320")`

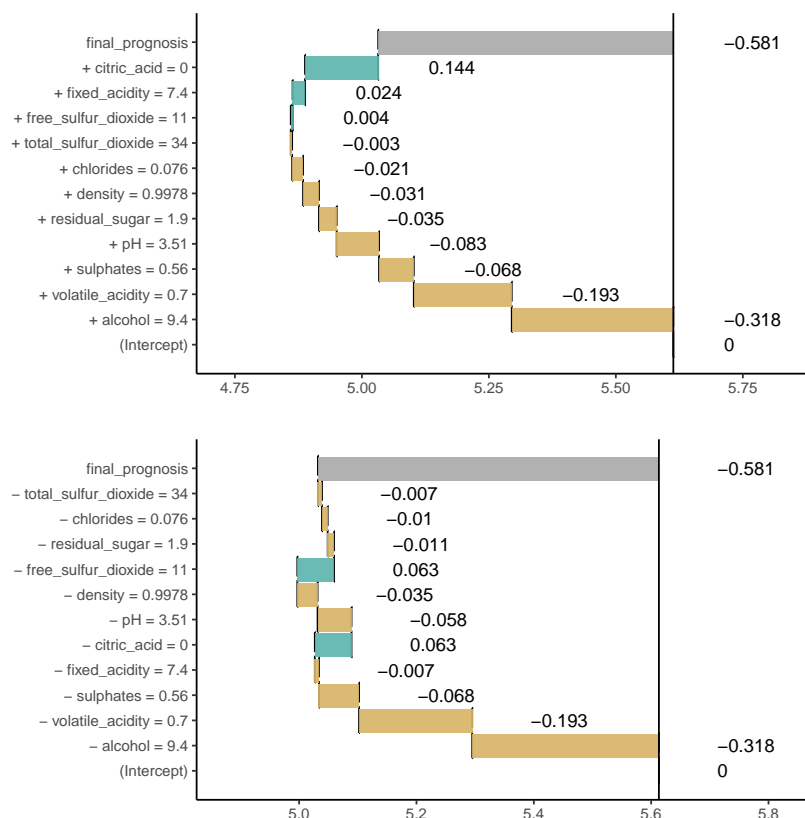


Figure 7: ag-break feature attributions for SVM model calculated for the 5th wine. The upper plot presents feature attributions for the step-up strategy, while the bottom plot presents results for the step-down strategy. Attributions are very similar even if the ordering is different. Vertical black line shows the average prediction for the SVM model. The 5th wine gets final prediction of 5.032 which is below the average for this model by 0.581 point.

Find more examples for classification and regression models created with `caret`, `mlr`, `randomForest` (Liaw and Wiener, 2002) and other frameworks in package `vignettes`⁶.

⁶<https://pbiecek.github.io/breakDown/>

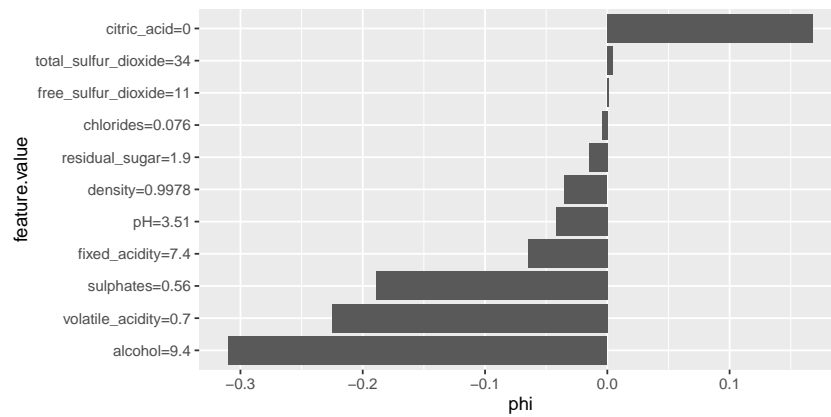


Figure 8: Visualization of Shapley values.

Shapley values (SHAP)

Authors of the original article about Shapley values maintain a Python package which implements several methods of computing these values. Also, it provides visual diagnostic tools that help understand global behavior of the black box model such as plotting variable contributions for all instances in the dataset.

The `iml` package can be used to compute Shapley values for any model. Other tools are more restricted in this regard, for example, the `shapleyR` package only works with `mlr` models. First, we need to create a `Predictor` object for the model, then it is enough to apply the `Shapley` function for a specified instance. This implementation samples permutation of variables to take into account different orders in which conditioning can be done and the number of permutations to be used is a parameter of this function. Details can be found in the documentation for the package.

```
model_svm = Predictor$new(model = wine_svm, data = wine[, -nc], y = wine$quality)
set.seed(17)
shapley_iml = Shapley$new(model_svm, x.interest = wine[5, -nc])
plot(shapley_iml)
```

Calculated Shapley values⁷ are presented in Table 2 and compared to results of Break Down method. Shapley values can be also visualized on a plot similar to waterfall plot, which can be created using generic `plot` function. An example is shown in Figure 8.

	feature	Shapley value	breakDown score
1	alcohol	-0.31	-0.32
2	volatile_acidity	-0.23	-0.19
3	sulphates	-0.19	-0.07
4	citric_acid	0.17	0.14
5	fixed_acidity	-0.06	0.02
6	pH	-0.04	-0.08
7	density	-0.03	-0.03
8	residual_sugar	-0.01	-0.03
9	total_sulfur_dioxide	0.00	-0.00
10	chlorides	-0.00	-0.02
11	free_sulfur_dioxide	0.00	0.00

Table 2: Comparison of feature attributions calculated with `iml` and `breakDown` packages.

Discussion

In this paper, we presented four approaches and four R packages that can be used for explanations of predictions from complex black box models. Two of them have already been introduced in literature, while `live` and `breakDown` were introduced in this article for the first time.

⁷Access this object with `archivist::aread("MI2DataLab/live/arepo/50f5f")`

All four approaches are model agnostic in a sense that, the method does not depend on any particular structure of black box model. Yet there are also some differences between these approaches.

1. Surrogate models vs. conditional expected responses. **live** and **lime** packages use surrogate models (the so-called white box models) that approximate local structure of the complex black box model. Coefficients of these surrogate models are used for explanations. Unlike them, **breakDown** and **shapleyR** construct feature attributions on the basis of conditional responses of a black box model.
2. **live** and **lime** packages differ in terms of the manner in which the surrounding of x^{new} is defined. This task is highly non-trivial especially for mixed data with continuous and categorical features. **live** does not use *interpretable input space* (and so does not fall under the *additive feature attribution methods* category), but approximates the black box model directly in the data space, what can be considered a more effective use of data. It comes with no theoretical guarantees that are provided for Shapley values, but apart from being very intuitive, it offers several tools for visual inspection of the model.
3. Computations required to obtain LIME and LIVE explanations are relatively simple. For large datasets, sampling can be easily parallelized. Shapley values and Break Down Plots, on the other hand, are more computationally demanding, but the current implementation of **breakDown** computes additive explanations in linear time.
4. **shapleyR** and **breakDown** take conditional expectation of the predictor function with respect to explanatory features. They differ in terms of the manner in which conditioning is applied to calculating feature attributions. **shapleyR** is based on results from game theory; in this package contribution of a single feature is averaged across all possible conditionings. **breakDown** uses a greedy approach in which only a single series of nested conditionings is considered. The greedy approach is easier to interpret and faster to compute. Moreover, exact methods of computing Shapley values exist only for linear regression and tree ensemble models. Approximate computations are also problematic, as they require the choice of the number of samples of subsets of predictors which will be used. These two methods produce nearly identical results for linear models (see table Table 2), but for more complex models the estimated contributions can be very different, even pointing in opposite directions. An advantage of Shapley values are proven theoretical properties, though they are restricted to explanation models that belong to the *additive feature attribution methods* class.
5. When parameters (kernel and regularization term) are chosen as in [Lundberg and Lee \(2017\)](#), **lime** produces estimates of Shapley values, while other choices of kernel and penalty term lead to inconsistent results. The fact that the suggested penalty term is equal to 0 can be considered a huge limitation of LIME and SHAP, because in this setting they will not produce sparse explanations.
6. All presented methods decompose final prediction into additive components attributed to particular features. This approach will not work well for models with heavy components related to interactions between features.
7. Evaluation of human-readability of discussed methods will be a subject of future research. It will help in making comparisons between different approaches to individual prediction explanations.
8. Authors of SHAP and LIME proposed methods of combining explanations calculated for different observations into global explanations. Such aggregation methods for Break Down and LIVE will also be a subject of future research.

Comparison of the methods presented in the previous section is far from being comprehensive. More research is needed to better understand the differences between these approaches and new approaches are needed to overcome the constraints listed above. Nevertheless, the availability of the mentioned packages creates an opportunity for further studies on model exploration.

Acknowledgements

Work on this article is financially supported by the *NCN Opus grant 2017/27/B/ST6/01307*.

Bibliography

- A. Altmann, L. Toloşi, O. Sander, and T. Lengauer. Permutation importance: a corrected feature importance measure. *Bioinformatics*, 26(10):1340–1347, 2010. ISSN 1460-2059, 1367-4803. [p395]

- D. W. Apley. Visualizing the Effects of Predictor Variables in Black Box Supervised Learning Models. *ArXiv e-prints*, 2016. [p395]
- P. Biecek. DALEX: Explainers for complex predictive models. *ArXiv e-prints*, 2018. [p396]
- P. Biecek and M. Kosinski. *archivist: An R Package for Managing, Recording and Restoring Data Analysis Results*. *Journal of Statistical Software*, 82(11):1–28, 2017. URL <https://doi.org/10.18637/jss.v082.i11>. [p396]
- B. Bischl, M. Lang, L. Kotthoff, J. Schiffner, J. Richter, E. Studerus, G. Casalicchio, and Z. M. Jones. *mlr: Machine learning in r*. *Journal of Machine Learning Research*, 17(170):1–5, 2016. [p395, 574]
- T. Chen, T. He, M. Benesty, V. Khotilovich, Y. Tang, H. Cho, K. Chen, R. Mitchell, I. Cano, T. Zhou, M. Li, J. Xie, M. Lin, Y. Geng, and Y. Li. *Xgboost: Extreme Gradient Boosting*, 2018. URL <https://CRAN.R-project.org/package=xgboost>. R package version 0.71.2. [p396]
- P. Cortez, A. Cerdeira, F. Almeida, T. Matos, and J. Reis. Modeling wine preferences by data mining from physicochemical properties. *Decis. Support Syst.*, 47(4):547–553, 2009. ISSN 0167-9236. URL <https://doi.org/10.1016/j.dss.2009.05.016>. [p401]
- M. Dowle and A. Srinivasan. *Data.table: Extension of 'data.frame'*, 2017. URL <https://CRAN.R-project.org/package=data.table>. R package version 1.10.4-3. [p397]
- A. Fogg. *Anthony Goldbloom Gives You the Secret to Winning Kaggle Competitions*, 2016. [p395]
- J. Friedman, T. Hastie, and R. Tibshirani. Regularization paths for generalized linear models via coordinate descent. *Journal of Statistical Software*, 33(1):1–22, 2010. URL <https://doi.org/10.18637/jss.v033.i01>. [p402]
- J. H. Friedman. Greedy function approximation: A gradient boosting machine. *Ann. Statist.*, 29(5):1189–1232, 2001. URL <https://doi.org/10.1214/aos/1013203451>. [p395]
- A. Goldstein, A. Kapelner, J. Bleich, and E. Pitkin. Peeking Inside the Black Box: Visualizing Statistical Learning With Plots of Individual Conditional Expectation. *Journal of Computational and Graphical Statistics*, 24(1):44–65, 2015. ISSN 1061-8600, 1537-2715. URL <https://doi.org/10.1080/10618600.2014.907095>. [p395]
- B. M. Greenwell. *Pdp: An r package for constructing partial dependence plots*. *The R Journal*, 9(1):421–436, 2017. URL <https://doi.org/10.32614/rj-2017-016>. [p395]
- N. Kennedy. *Forestmodel: Forest Plots from Regression Models*, 2017. URL <https://CRAN.R-project.org/package=forestmodel>. R package version 0.4.3. [p397]
- M. Kuhn. *Caret: Classification and Regression Training*, 2018. URL <https://CRAN.R-project.org/package=caret>. R package version 6.0-80. [p395]
- A. Liaw and M. Wiener. Classification and regression by randomforest. *R News*, 2(3):18–22, 2002. [p405]
- S. M. Lundberg and S.-I. Lee. A unified approach to interpreting model predictions. In I. Guyon, U. V. Luxburg, S. Bengio, H. Wallach, R. Fergus, S. Vishwanathan, and R. Garnett, editors, *Advances in Neural Information Processing Systems 30*, pages 4765–4774. Curran Associates, Inc., 2017. [p396, 407]
- D. Meyer, E. Dimitriadou, K. Hornik, A. Weingessel, and F. Leisch. *E1071: Misc Functions of the Department of Statistics, Probability Theory Group (Formerly: E1071), TU Wien*, 2018. URL <https://CRAN.R-project.org/package=e1071>. R package version 1.7-0. [p401]
- C. Molnar, B. Bischl, and G. Casalicchio. *Iml: An r package for interpretable machine learning*. *JOSS*, 3(26):786, 2018. URL <https://doi.org/10.21105/joss.00786>. [p395]
- T. L. Pedersen and M. Benesty. *Lime: Local Interpretable Model-Agnostic Explanations*, 2018. URL <https://CRAN.R-project.org/package=lime>. R package version 0.4.1. [p395]
- N. Puri, P. Gupta, P. Agarwal, S. Verma, and B. Krishnamurthy. *MAGIX: Model Agnostic Globally Interpretable Explanations*. *ArXiv e-prints*, 2017. [p395]
- M. T. Ribeiro, S. Singh, and C. Guestrin. "why should i trust you?": Explaining the predictions of any classifier. In *Proceedings of the 22Nd ACM SIGKDD International Conference on Knowledge Discovery and Data Mining*, KDD '16, pages 1135–1144, New York, NY, USA, 2016. ACM. ISBN 978-1-4503-4232-2. URL <https://doi.org/10.1145/2939672.2939778>. [p395, 396]

- M. Robnik-Šikonja and I. Kononenko. Explaining classifications for individual instances. *IEEE Transactions on Knowledge and Data Engineering*, 20(5):589–600, 2008. ISSN 1041-4347. URL <https://doi.org/10.1109/tkde.2007.190734>. [p399]
- N. Simon, J. Friedman, T. Hastie, and R. Tibshirani. Regularization paths for cox’s proportional hazards model via coordinate descent. *Journal of Statistical Software*, 39(5):1–13, 2011. URL <https://doi.org/10.18637/jss.v039.i05>. [p402]
- C. Strobl, A.-L. Boulesteix, T. Kneib, T. Augustin, and A. Zeileis. Conditional variable importance for random forests. *BMC Bioinformatics*, 9(307), 2008. [p397]
- M. Tulio Ribeiro, S. Singh, and C. Guestrin. Nothing Else Matters: Model-Agnostic Explanations By Identifying Prediction Invariance. *ArXiv e-prints*, 2016. [p395]
- F. Y. Tzeng and K. L. Ma. Opening the black box - data driven visualization of neural networks. In *VIS 05. IEEE Visualization, 2005.*, pages 383–390, 2005. URL <https://doi.org/10.1109/visual.2005.1532820>. [p395]
- M. D. Zeiler and R. Fergus. Visualizing and understanding convolutional networks. In *Computer Vision – ECCV 2014*, pages 818–833. Springer-Verlag, 2014. ISBN 978-3-319-10590-1. URL https://doi.org/10.1007/978-3-319-10590-1_53. [p395]
- E. Štrumbelj and I. Kononenko. A general method for visualizing and explaining black-box regression models. In *Proceedings of the 10th International Conference on Adaptive and Natural Computing Algorithms - Volume Part II, ICANNGA’11*, pages 21–30, Berlin, Heidelberg, 2011. Springer-Verlag. ISBN 978-3-642-20266-7. URL https://doi.org/10.1007/978-3-642-20267-4_3. [p395]

Mateusz Staniak
Faculty of Mathematics and Information Science
Warsaw University of Technology
Poland
m.staniak@mini.pw.edu.pl

Przemysław Biecek
Faculty of Mathematics and Information Science
Warsaw University of Technology
Faculty of Mathematics, Informatics and Mechanics
University of Warsaw
Poland
ORCID: 0000-0001-8423-1823
przemyslaw.biecek@gmail.com