

# comf: An R Package for Thermal Comfort Studies

by Marcel Schweiker

**Abstract** The field of thermal comfort generated a number of thermal comfort indices. Their code implementation needs to be done by individual researchers. This paper presents the R package, **comf**, which includes functions for common and new thermal comfort indices. Additional functions allow comparisons between the predictive performance of these indices. This paper reviews existing thermal comfort indices and available code implementations. This is followed by the description of the R package and an example how to use the R package for the comparison of different thermal comfort indices on data from a thermal comfort study.

## Introduction

Since the 1960's, researchers in the field of thermal comfort generated a number of thermal comfort indices (see 44.1.1 for details). The three most common indices are the predicted mean vote (PMV) introduced by Fanger (1970), the standard effective temperature (SET) by Gagge et al. (1986), and the adaptive comfort equation as presented e.g. in DIN EN 15251 (2012) and ASHRAE (2013). The latter is based on the work of Auliciems (1981a), de Dear et al. (1997), Nicol and Humphreys (2002) and others.

The purpose of these indices is the prediction of a) thermally acceptable indoor conditions or b) the evaluation of indoor conditions by a group of persons. The calculation procedures and/or equations for the indices are described in the literature they are introduced. However, in most cases the code implementation needs to be done by each researcher individually. Such process is a source for errors; chances are high that the codes of two researchers do not lead to the same outcome given identical input parameters. Therefore, I introduce the R package, **comf**, that enables the calculation of the most common thermal comfort indices and several new indices. The objective is to create a publicly available reference for comparisons and benchmarking.

Additional functions of this package allow a comparison between the outcome of those indices compared to subjective evaluations obtained by a given sample of occupants in a building. Such evaluation of the indices performance is seldom found in thermal comfort research. Given the increasing number of indices, such comparison needs to be done more often in order to judge under which circumstances which index performs best (Schweiker and Wagner, 2015, 2016).

In this paper, existing thermal comfort indices are reviewed together with available tools and code implementations for their calculation. This is followed by the introduction of the R package, **comf**, and an example application to an existing dataset.

## Review of thermal comfort indices

Table 1 gives an overview of the indices dealt with in this article or included in the R package, **comf**. Thereby, this list is not exclusive given the high number of additional comfort indices.

The indices can be grouped according to their outcome in those predicting

- a mean vote on the 7-point thermal sensation scale,
- a neutral or comfortable temperature, or
- other values related to the perception of the thermal indoor environment.

The 7-point thermal sensation scale is the standard scale for the assessment of thermal perception given to subjects and is coded  $-3$  cold,  $-2$  cool,  $-1$  slightly cool,  $0$  neither cold nor warm,  $+1$  slightly warm,  $+2$  warm,  $+3$  hot (ISO 7726, 1998). Traditionally, this scale was used as categorical scale, but recent studies are using either a categorical or a continuous version (Schweiker et al., 2016a).

The neutral temperature is a set of operative temperatures evaluated in average as neutral (neither cold nor warm) on the 7-point thermal sensation scale (Auliciems, 1981b; Humphreys, 1978). Sometimes, this is also referred to as comfortable temperature (Schweiker et al., 2016a). Additional members of this group of indices are the adaptive comfort temperatures (Brager and de Dear, 2001; Nicol and Humphreys, 2010)

The other values are e.g. related to the thermal strain of an individual due to the indoor thermal environment (Gagge et al., 1986), the exergy consumption rate of the human body (Shukuya, 2009), or

Index	Input variables <sup>1</sup>	Output	Reference
PMV	ta, tr, rh, vel, clo, met	Predicted mean vote (-3 to +3)	(Fanger, 1970)
PMV <sub>adj</sub>	ta, tr, rh, vel, clo, met	Predicted mean vote (-3 to +3)	(ASHRAE, 2013; Schiavon et al., 2014)
ePMV	ta, tr, rh, vel, clo, met, e or asv	Predicted mean vote (-3 to +3)	(Fanger and Toffum, 2002)
aPMV	ta, tr, rh, vel, clo, met, $\lambda$ or asv	Predicted mean vote (-3 to +3)	(Yao et al., 2009)
ATHB <sub>pmv</sub>	ta, tr, rh, vel, met, trm, psych	Predicted mean vote (-3 to +3)	(Schweiker and Wagner, 2015)
PTS	ta, tr, rh, vel, clo, met	Predicted thermal sensation (-3 to +3)	(McIntyre, 1980)
PTSe	ta, tr, rh, vel, clo, met, e or asv	Predicted thermal sensation (-3 to +3)	(Gao et al., 2015)
PTSa	ta, tr, rh, vel, clo, met, $\lambda$ or asv	Predicted thermal sensation (-3 to +3)	(Gao et al., 2015)
ATHB <sub>pts</sub>	ta, tr, rh, vel, met, trm, psych	Predicted thermal sensation (-3 to +3)	(Schweiker and Wagner, 2016)
tAdapt15251	trm	Adaptive comfort temperature	(DIN EN 15251, 2012; Nicol and Humphreys, 2010)
tAdaptASHRAE	tmmo	Adaptive comfort temperature	(Brager and de Dear, 2001)
tnAuliciems	ta, tmmo	Neutral temperature	(Auliciems, 1981b)
tnHumphreysNV	tmmo	Neutral temperature in natural-ventilated buildings	(Humphreys, 1978)
tnHumphreysAC	tmmo	Neutral temperature in climate-controlled buildings	(Humphreys, 1978)
PPD	ta, tr, rh, vel, clo, met	Predicted percentage dissatisfied (0 to 100)	(Fanger, 1970)
SET	ta, tr, rh, vel, clo, met	Standard effective temperature	(Gagge et al., 1986)
dTNZ	ta, vel, clo, met	Distance to thermoneutral zone	(Kingma et al., 2016)
Ex	ta, tr, rh, vel, clo, met, tao, rho	Human body exergy consumption rate	(Shukuya, 2009)

<sup>1</sup>ta = air temperature; tr = radiant temperature; rh = relative humidity; vel = air velocity; clo = clothing insulation level; met = metabolic rate; tao = outdoor air temperature; rho = outdoor relative humidity; trm = running mean outdoor temperature; tmmo = monthly mean outdoor temperature; e = expectancy factor;  $\lambda$  = adaptive coefficient; psych = factor related to psychological adaptation; asv = actual sensation vote

**Table 1:** Thermal comfort indices included in the R package, **comf**, their input variables, output description, values, and references

the distance of observed operative temperature or mean skin temperature to the thermoneutral zone (Kingma et al., 2016) and will be explained below.

The first group of indices predicting a mean vote on the thermal sensation scale consists of the PMV-index and its alterations (s. below) together with the predicted thermal sensation (PTS) based on the SET-index and corresponding adjusted versions.

The PMV index is based on the assumption that comfortable conditions are perceived when there is a balance between the heat generated by the metabolism and the heat lost or gained through convection, radiation, and evaporation (Fanger, 1970).

Alterations to the PMV-index are

- the adjusted PMV ( $PMV_{adj}$ ), which modifies the PMV model for elevated air velocities (ASHRAE, 2013; Schiavon et al., 2014),
- the ePMV, which uses the expectancy factor,  $e$ , to account for variations in the expectation of people (Fanger and Toftum, 2002),
- the aPMV, which alters the PMV based on an adaptive coefficient,  $\lambda$ , which represents the sum of behavioural, physiological, and psychological adaptation (Yao et al., 2009), and
- the  $ATHB_{pmv}$ , which adjusts the input values for clothing level and metabolic rate based on individual equations for the three just mentioned adaptive processes (Schweiker and Wagner, 2015).

In order to calculate the PTS it is necessary to calculate the SET first (s. below). Then, PTS can be calculated through the equation (McIntyre, 1980):

$$PTS = .25 \cdot SET - 6.03. \quad (1)$$

Adjusted versions of the PTS are parallel to the alterations to PMV,

- the PTSe using the expectancy factor (Gao et al., 2015),
- the PTSa using the adaptive coefficient (Gao et al., 2015), and
- the  $ATHB_{pts}$  changing the input values of clothing level and metabolic rate for the calculation of SET (Schweiker and Wagner, 2016).

The second group of indices consists of the adaptive comfort equations given e.g. in DIN EN 15251 (2012) and Brager and de Dear (2001) as well as the equations for the neutral temperatures by Auliciems (1981b) and Humphreys (1978). Both types of equations calculate the indoor environmental temperature to be evaluated as neutral on the 7-point thermal sensation scale or as comfortable.

The third group consists of the predicted percentage of dissatisfied (PPD), the SET, the distance to the thermoneutral zone (dTNZ), and the exergy consumption rate (Ex).

The predicted percentage of dissatisfied (PPD) is calculated based on the PMV value as described in Fanger (1970) by

$$PPD = 100 - 95e^{[-(.3353 \cdot PMV^4 + .2179 \cdot PMV^2)]}. \quad (2)$$

The SET is "the temperature of an imaginary environment at 50% relative humidity, <0.1 m/s average air speed, and mean radiant temperature equal to average air temperature, in which total heat loss from the skin of an imaginary occupant with an activity level of 1.0 met and a clothing level of 0.6 clo is the same as that from a person in the actual environment, with actual clothing and activity level" (ASHRAE, 2013) and is based on the work by Gagge and his group (Gagge et al., 1986).

The dTNZ was introduced by Kingma et al. (2016) and presents a biophysical approach to predict thermal sensation. Similar to the ATHB, the dTNZ is a new concept and still needs to be further evaluated. The same is true for the concept of Ex. A lower Ex was shown to be related to conditions regarded as thermally comfortable. Schweiker et al. (2016b); Simone et al. (2011) demonstrated that there is a relationship between Ex, thermal sensation, and thermal acceptance.

### Existing software and tools

Only few of the thermal comfort indices can be calculated with existing tools. Table 2 gives an overview of existing software, applications, and code implementations. In addition, several building energy performance simulation programs, e.g. Energy+, do offer the option to calculate the PMV value or other value.

Name	Type	Comfort indices	Link/Source
ASHRAE Thermal Comfort Tool	Software	PMV, PMVadj, PPD, SET, Tadapt	<a href="https://www.ashrae.org/resources--publications/bookstore/thermal-comfort-tool">https://www.ashrae.org/resources--publications/bookstore/thermal-comfort-tool</a>
CBE comfort tool	Web application	PMV/PMVadj, PPD, SET, Tadapt	<a href="http://comfort.cbe.berkeley.edu/">http://comfort.cbe.berkeley.edu/</a> <sup>1</sup> , Fountain and Huizenga (1995); Schiavon et al. (2014)
USYD home-page ISO 7730	Web application	PMV, PPD, SET, ET, + <sup>2</sup>	<a href="http://web.arch.usyd.edu.au/~rddedear/">http://web.arch.usyd.edu.au/~rddedear/</a>
Gagge et al.	Code snippets in BASIC	PMV, PPD	ISO 7730 (2005)
	Code snippets in FORTRAN	SET, ET, + <sup>2</sup>	Gagge et al. (1986)
ASHRAE PMV	Code snippets in BASIC	PMV, PPD	ASHRAE (2013)
ASHRAE SET <sup>3</sup>	Code snippets in Java	SET	ASHRAE (2013)
Schweiker et al.	Code snippets in R	HbExUnSt	Schweiker et al. (2016b)
Shukuya	Excel sheet	HbExUnSt	Shukuya

<sup>1</sup>The source code is available at [https://github.com/CenterForTheBuiltEnvironment/comfort\\_tool](https://github.com/CenterForTheBuiltEnvironment/comfort_tool)

<sup>2</sup>+ = and other indices

<sup>3</sup>A version of SET fit for adjusting PMV to higher air velocities

**Table 2:** Existing applications, software, and code snippets for the calculation of thermal comfort indices

Notable exceptions are the calculations of the most common indices: a BASIC code is given in ISO 7730 (2005) for the calculation of PMV and PPD and a FORTRAN code for the calculation of SET was presented in Gagge et al. (1986). Recently a JavaScript-version for SET calculation was included in ASHRAE (2013). However, this version does not use the full code for calculation of SET by Gagge et al. (1986) or Fountain and Huizenga (1995), but a modified version. The difference is that for the SET-code used in ASHRAE (2013), the part related to convection from metabolically-generated air movement has been removed. This was done in order to have a smooth transition from original PMV values up to .15 m/s of air velocity to the adjusted PMV values starting above this air velocity.

Another source for code implementations is the source code of the CBE comfort tool, which is available at [https://github.com/CenterForTheBuiltEnvironment/comfort\\_tool](https://github.com/CenterForTheBuiltEnvironment/comfort_tool). This includes code in JavaScript and Python for the calculation of PMV, PMV<sub>adj</sub>, the adaptive comfort temperature and range, and the modified SET calculation as described in ASHRAE (2013).

## Introduction to the package `comf`

The idea behind the R package, `comf` is to support researchers in the field of thermal comfort not only through publicly available code implementations for the calculation of comfort indices in R, but also through additional functions. Therefore, the main functions of this package can be grouped into those related to

- the preparation of a dataset and transformation of physical variables,
- the calculation of one or more comfort indices (see Table 1), and
- the evaluation of the performance of a comfort index.

## Preparation of a dataset and conversion of physical variables

Each thermal comfort index requires different input parameters. Therefore, the R package, **comf**, offers two procedures in order to prepare a dataset to be used as input to the calculation of one or more thermal comfort indices.

The first procedure starts with calling the function `createCond`. This function creates a list with standard values for the variables required for all comfort indices included in this package. Own data or further adjustments to these values could be done as follows:

```
install.packages("comf_0.1.6.tar.gz", repos=NULL, type="source")
library(comf)

lsCond <- createCond()
lsCond$ta <- 21:30
lsCond$rh <- 51:60
lsCond$met <- 1.0
```

It is important that the length of vectors assigned to the elements of this list are either 1 or do have the same length. In above example, it is not possible to assign a vector with 11 items to `ta`, the indoor air temperature, and a vector with 10 items to `rh`, the relative humidity indoors.

The second procedure starts with a dataframe containing all variables to be used for the calculation. This procedure requires the user to know the required variables. This dataframe can then be transferred into a list or used directly.

```
ta <- 21:30
rh <- 51:60
met <- 1.0
dfCond <- data.frame(ta, rh, met)
lsCond2 <- as.list(dfCond)
```

In addition, **comf** offers a variety of small functions to convert variables from one type to another. This includes among others

- `calcDewp`, which calculates the dew point temperature, given air temperature and relative humidity,
- `calcEnth`, which calculates the enthalpy of the air, given air temperature, relative humidity, and barometric pressure,
- `calcRH`, which calculates the relative humidity of air, given air temperature, mixing ratio, and barometric pressure,
- `calcTroin`, which calculates the operative and radiant temperature for standard globe measurements according to [ISO 7726 \(1998\)](#), given air temperature, globe temperature, air velocity, and metabolic rate.

## Calculating one or more comfort indices

Before the preparation of a dataset, it is important to know that the structure of the input to functions for the calculation of one specific index such as `calcATHB` differs to that of the main function, `calcComfInd`. The latter requires a list or data frame with variables as described below, while the former works with vectors or data frames.

There are again two possibilities to calculate one or more comfort indices.

The first one uses the main function of this package, `calcComfInd`. This function requires a list or data frame of variables together with a vector of comfort indices to be calculated, e.g. `request="all"` to calculate all indices or `request=c("ATHBpmv", "pmv")` to calculate these two. The list of variables can consist of one item per variable or several items per variable, i.e. one value for each input parameter, or for some parameters 234 values and for the others one parameter. The rationale behind this is that very often, variables such as age, gender, or metabolic rate do not differ in a given dataset, while others like the indoor air temperature are different for each case. A complete list of indices to be calculated can be found in the help file of `calcComfInd` or obtained calling `listOfRequests()`.

The function `calcComfInd` checks whether there is only one or more values for each variable and whether all variables required for the thermal comfort index to be calculated exist in the list. In case one or more required variables do not exist, the index is calculated using pre-defined standard values for these variables. In such case a warning is given at the end of the calculation in order to inform the user about the missing variable(s) and the value(s) used for the calculation.

```
# using lsCond from above does not produce a warning
calcComfInd(lsCond, request="all")

# using lsCond2 from above displays 31 warnings which report
# the corresponding standard values used
calcComfInd(lsCond2, request="all")
warnings()

# the results however are identical
```

Individual functions, e.g. `calcSET` to calculate SET, can be used for the second possibility to calculate one or more comfort indices. With this procedure, one can use a data frame or a list of vectors to calculate a specific thermal comfort index. The list of required variables as well as information about the standard values used when a variable is missing is included in each helpfile, e.g. `?calcSET`.

The following example illustrates the usage for multiple input lines:

```
ta <- c(20,22,24)
tr <- ta
vel <- rep(0.15,3)
rh <- rep(50,3)

maxLength <- max(sapply(list(ta, tr, vel, rh), length))
SET <- sapply(seq(maxLength),
function(x) { calcSET(ta[x], tr[x], vel[x], rh[x]) } )
```

### Evaluating the performance of one or more comfort indices

Due to the number of new or adjusted indices being presented in the scientific literature, the comparison between the performance of them will be an important aspect in future studies. The R package, `comf`, includes functions for different performance criteria.

The function `calcBias` calculates the mean bias, its standard deviation, and standard error between the actual (observed) thermal sensation vote (ASV) and the predicted thermal sensation vote (PSV) (Humphreys and Nicol, 2002). This is calculated according to

$$\text{mean bias} = \text{mean}(PSV_i - ASV_i), \quad (3)$$

where  $i$  denotes the individual vote.

The true positive rate (TPR) is the proportion of true predicted cases, where the categorical ASV is equal to the categorical PSV (Schweiker and Wagner, 2015). This can be calculated using the function `calcTPRTSV`, which calculates

$$TPR = \frac{1}{n} \sum_{i=1}^k tp_k, \quad (4)$$

where  $k$  denotes the category of the sensation scale (e.g. *cold*),  $n$  the total number of votes, and  $tp$  the true positive cases, where the categorical PSV is equal to the categorical ASV.

The function `calcAvgAcc` calculates the average accuracy between PSV and ASV according to Sokolova and Lapalme (2009) by

$$\text{average accuracy} = \frac{1}{l} \sum_{i=1}^l \frac{tp_i + tn_i}{tp_i + fn_i + fp_i + tn_i}, \quad (5)$$

where  $l$  denotes the number of categories of the sensation scale,  $tp$ ,  $tn$ ,  $fn$ , and  $fp$  the number of true positives, true negatives, false positives, and false negatives for the corresponding class. Note that the value of the average accuracy depends strongly on the distribution of ASV, i.e. in case most of the ASV's are in the same category, e.g. *neutral*, the average accuracy is very high due to the fact that for all other categories the number of true negative predicted votes is high as well.

Column	Variable name	Unit	Derivation
ta	Air temperature	°C	Measured
tr	Radiant temperature	°C	Assumed to be equal to ta
rh	Relative humidity	%	Measured
trm	Running mean outdoor temperature	°C	Calculated from tout using the equation from <a href="#">DIN EN 15251 (2012)</a>
clo	Clothing insulation level	CLO	Assessed during visit
tout	Outdoor air temperature	°C	Measured
vel	Air velocity	m/s	Assumed based on state of window(s) and door
met	Metabolic rate	MET	Assumed based on <a href="#">ISO 7730 (2005)</a>
asv	Actual sensation vote	–	Obtained through questionnaire

**Table 3:** Variables included in the dataset together with their derivation

## An example using data from a field experiment

The R package, `comf`, includes a data set deriving from a field experiment. This field measurement is described in detail in [Hawighorst et al. \(2016\)](#) and [Schweiker and Wagner \(2016\)](#). The data set included in this package contains 156 samples, which is a subset of the original data set with 620 samples, and was drawn with the R function `sample`.

The original data set was obtained by two field experiments in six office buildings in southern Germany. They were conducted during the summer periods of 2011 and 2012. Data loggers for air temperature and relative humidity were placed in the offices. In addition outdoor air temperature and relative humidity were measured with another data logger on the roof of each building.

Subjects were visited up to 4 times during a two week period. The number of votes obtained by each subject differs due to absence periods of subjects. During each visit, subjects were asked about their thermal sensation (7-point categorical scale with the categories –3 cold, –2 cool, –1 slightly cool, 0 neutral, +1 slightly warm, +2 warm, +3 hot) together with a set of additional questions not relevant for this paper. While the subjects answered the paper-pencil based questionnaire the investigator noted down the clothing level of each subject. Written informed consent was obtained from the subjects prior to the installment of the data loggers. The air velocity included in the data set was estimated based on the state of window(s), door, and table fan and detailed measurements in a single room.

The variables included in the dataset are presented in Table 3. Descriptive statistics of the data set included in the package can be explored using:

```
library(comf)
library(psych)
data(dfField)
describe(dfField)
```

In order to calculate a number of comfort indices for the conditions present in the data, it is recommended to start with the list of standard values and assign the values of the data set to the corresponding items of the list by:

```
# creating a list with standard values
lsField <- createCond()

# assigning the variables included in the data set to the list
variables <- c("ta", "tr", "vel", "rh", "clo", "met", "trm", "asv", "tao")
for(i in 1:length(variables)) {
  lsField[[variables[i]]] <- dfField[[variables[i]]]
}
```

For this example, the following 8 thermal comfort indices will be calculated and compared: PMV, PMVadj, ATHBpmv, aPMV, ePMV, PTS, PTSa, PTSe, and ATHBpts. In order to be able to calculate aPMV, ePMV, PTSa, and PTSe, one needs to get an estimate for the adaptive coefficient and expectancy factor. This is done using the corresponding functions of the package by:

```
lsField$epCoeff <- calcepCoeff(lsField)$epCoeff
lsField$apCoeff <- calcapCoeff(lsField)$apCoeff
```

```
lsField$esCoeff <- calcesCoeff(lsField)$esCoeff
lsField$asCoeff <- calcasCoeff(lsField)$asCoeff
```

Then, the thermal comfort indices are calculated at once using the function `calcComfInd`. Note that it would be also possible to calculate all eight indices individually by calling their function as described above.

```
indices <- c('pmv', 'pmvadj', 'apmv', 'epmv', 'ATHBpmv',
            'pts', 'ptsa', 'ptse', 'ATHBpts')
results <- calcComfInd(lsField, request = indices)
```

For the comparison between predicted thermal sensation votes and actual thermal sensation votes, the predicted continuous sensation votes need to be converted into categorical ones. This is necessary, because the actual sensation vote included in the dataset was obtained using a categorical scale. This can be done using the function `cutTSV`, which converts continuous thermal sensation votes to categorical ones. The conversion is done using intervals closed on the right, e.g. setting all values higher than  $-2.5$  and lower or equal  $-1.5$  to the value of  $-2$ .

```
asv.cat <- cutTSV(dfField$asv)
results.cat <- lapply(seq(length(indices)), function(i) {cutTSV(results[,i])})
names(results.cat) <- indices
```

With the binned predicted values of thermal sensation votes, the mean bias, its standard error, and the true positive rate (TPR) can be calculated for each thermal comfort index individually:

```
# calculating mean value of bias between predicted and actual sensation vote
# for each comfort index
meanBias <- sapply(indices, function(i) {
  calcBias(asv.cat, results.cat[[i]])$meanBias
})

# calculating standard error of bias between predicted and actual sensation vote
# for each comfort index
seBias <- sapply(indices, function(i) {
  calcBias(asv.cat, results.cat[[i]])$seBias
})

# calculating the true positive rate for each comfort index
TPR <- sapply(indices, function(i) {
  calcTPRTSV(asv.cat, results.cat[[i]])
})
```

The comparison of bias and true positive rate can be done e.g. graphically using the R package, **ggplot2**:

```
library(ggplot2)
library(plyr)
library(reshape2)

group <- c("PMV", "PMVadj", "aPMV", "ePMV", "ATHB pmv", "PTS", "PTSa",
          "PTSe", "ATHB pts")
lower <- meanBias - seBias
upper <- meanBias + seBias

fig4Win <- data.frame(meanBias, TPR, group, lower, upper)
fig4Win$variable <- rep(2,9)
fig4Win$group <- factor(fig4Win$group, levels = fig4Win$group)

addline_format <- function(x,...){
```



```

    gsub('\s', '\n', x)
  }

means.barplot <- qplot(x=group, y=meanBias, data=fig4Win, geom="point",
  stat="identity", position="dodge", ymax=.5) +
  scale_x_discrete(breaks=unique(fig4Win$group),
  labels=addline_format(c("PMV", "PMVadj", "aPMV", "ePMV",
  "ATHB pmv", "PTS", "PTSa", "PTSe", "ATHB pts")))

means.barplot + geom_errorbar(aes(ymax=upper, ymin=lower),
  position=position_dodge(0.9), data=fig4Win) +
  theme_bw() +
  xlab("Comfort indices") +
  ylab("bias PSV - ASV") +
  ylim(c(-1, .5))

## uncomment next line to save file to current working directory
#ggsave("Fig1_MeanBias.png")

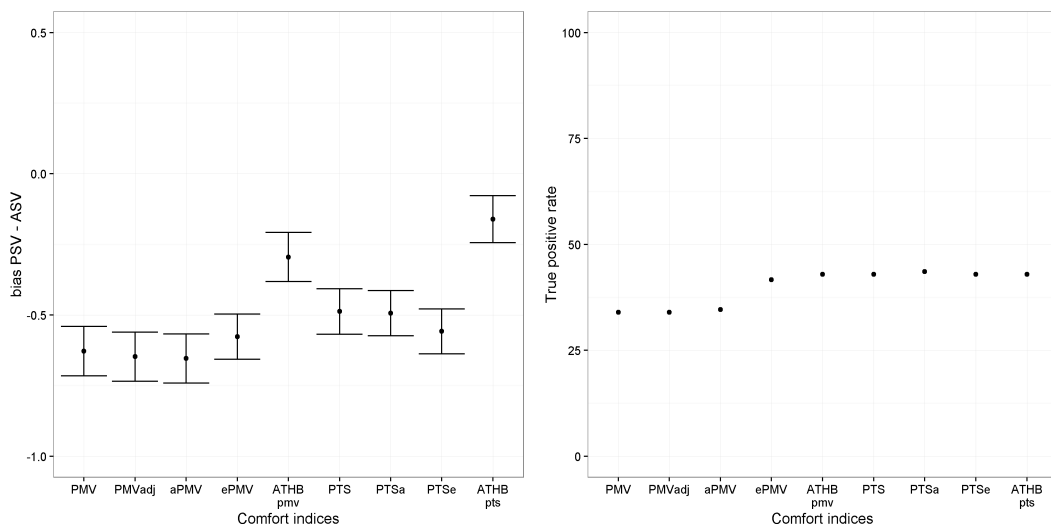
means.barplot <- qplot(x=group, y=TPR*100, data=fig4Win, geom="point",
  stat="identity", position="dodge", ymax=100) +
  scale_x_discrete(breaks=unique(fig4Win$group),
  labels=addline_format(c("PMV", "PMVadj", "aPMV", "ePMV", "ATHB pmv",
  "PTS", "PTSa", "PTSe", "ATHB pts")))

means.barplot +
  theme_bw() +
  xlab("Comfort indices") +
  ylab("True positive rate") +
  ylim(c(0, 100))

## uncomment next line to save file to current working directory
#ggsave("Fig1_TPR.png")

```

The result can be seen in Figure 1. This shows, that for this particular data set, the indices ATHBpmv and ATHBpts have the lowest mean bias between predicted and actual sensation votes. Related to the true positive rate, there are five indices with a similar performance of around 42% of truly predicted sensation votes, while the true positive rate of the other three indices is around 34%.



(a) Mean bias and standard error.

(b) True positive rate.

**Figure 1:** True positive rate for eight comfort indices.

## Summary

This article has described the R package *comf*. This package implements several functions to assist researchers in the field of thermal comfort. The main functions calculate various common and less common thermal comfort indices. Additional functions are related to the preparation of a suitable data set and to the comparison of observed and predicted assessment.

## Acknowledgements

The author would like to thank Sophia Mueller for her outstanding work during the preparation of this package. The author would like to thank Masanori Shukuya for the permission to include the code implementation based on the VBA code for the calculation of human body exergy consumption rate. In addition, the author would like to thank those who contributed to parts of the code or checked one or more of the functions, namely Michael Kleber and Boris Kingma.

## Bibliography

- ASHRAE. Standard 55-2013. Thermal environmental conditions for human occupancy. *American Society of Heating, Refrigerating and Air-Conditioning Engineering, Atlanta, USA*, 2013. [p341, 342, 343, 344]
- A. Auliciems. Towards a psychophysiological model of thermal perception. *International Journal of Biometeorology*, 25:109–122, 1981a. [p341]
- A. Auliciems. Psycho-physiological criteria for global thermal zones of building design. *Int J Biometeorol*, 26:69–86, 1981b. [p341, 342, 343]
- G. S. Brager and R. de Dear. Climate, comfort, & natural ventilation: a new adaptive comfort standard for ASHRAE standard 55. *Center for the Built Environment. UC Berkeley*, 2001. [p341, 342, 343]
- R. de Dear, G. S. Brager, and D. Cooper. Developing an adaptive model of thermal comfort and preference. In *Final Report on ASHRAE Research Project 884. Macquarie University Sydney*, 1997. [p341]
- DIN EN 15251. Indoor environmental input parameters for design and assessment of energy performance of buildings addressing indoor air quality, thermal environment, lighting and acoustics; German version EN 15251:2012, August 2012. DIN EN 15251. [p341, 342, 343, 347]
- P. O. Fanger. *Thermal Comfort Analysis and Applications in Environmental Engineering*. McGraw-Hill, New York, 1970. [p341, 342, 343]
- P. O. Fanger and J. Toftum. Extension of the PMV model to non-air-conditioned buildings in warm climates. *Energy and Buildings*, 34:533–536, 2002. [p342, 343]
- M. Fountain and C. Huizenga. A thermal sensation model for use by the engineering profession. Technical report, ASHRAE RP-781 Final report, 1995. [p344]
- A. P. Gagge, A. P. Fobelets, and L. G. Berglund. A standard predictive index of human response to the thermal environment. *ASHRAE Transactions*, 92 (2B):709–731, 1986. [p341, 342, 343, 344]
- J. Gao, Y. Wang, and P. Wargocki. Comparative analysis of modified pmv models and set models to predict human thermal sensation in naturally ventilated buildings. *Building and Environment*, 92: 200–208, 2015. [p342, 343]
- M. Hawighorst, M. Schweiker, and A. Wagner. Thermo-specific self-efficacy (specse) in relation to perceived comfort and control. *Building and Environment*, 102:193 – 206, 2016. ISSN 0360-1323. doi: <http://dx.doi.org/10.1016/j.buildenv.2016.03.014>. URL <http://www.sciencedirect.com/science/article/pii/S0360132316300919>. [p347]
- M. A. Humphreys. Outdoor temperatures and comfort indoors. *Batiment International, Building Research and Practice*, 6(2):92–92, 1978. [p341, 342, 343]
- M. A. Humphreys and J. F. Nicol. The validity of iso-pmv for predicting comfort votes in every-day thermal environments. *Energy and buildings*, 34(6):667–684, 2002. [p346]
- ISO 7726. Ergonomics of the Thermal Environment, Instruments for Measuring Physical Quantities. Geneva: International Standard Organization, 1998. [p341, 345]

- ISO 7730. Ergonomics of the thermal environment. Analytical determination and interpretation of thermal comfort using calculation of the PMV and PPD indices and local thermal comfort criteria. Geneva: International Standard Organization, 2005. [p344, 347]
- B. R. Kingma, M. Schweiker, A. Wagner, and W. D. van Marken Lichtenbelt. Exploring the potential of a biophysical model to understand thermal sensation. In *Proceedings of 9th Windsor Conference: Making comfort relevant Cumberland Lodge, Windsor, UK*, 2016. [p342, 343]
- D. A. McIntyre. *Indoor climate*. Applied Science Publisher, London, 1980. [p342, 343]
- J. F. Nicol and M. A. Humphreys. Adaptive thermal comfort and sustainable thermal standards for buildings. *Energy and buildings*, 34(6):563–572, 2002. [p341]
- J. F. Nicol and M. A. Humphreys. Derivation of the adaptive equations for thermal comfort in free-running buildings in European standard {EN15251}. *Building and Environment*, 45(1):11 – 17, 2010. ISSN 0360-1323. doi: <http://dx.doi.org/10.1016/j.buildenv.2008.12.013>. URL <http://www.sciencedirect.com/science/article/pii/S036013230800303X>. International Symposium on the Interaction between Human and Building Environment Special Issue Section. [p341, 342]
- S. Schiavon, T. Hoyt, and A. Piccoli. Web application for thermal comfort visualization and calculation according to ASHRAE standard 55. *Building Simulation*, 7(4):312–334, 2014. doi: <http://dx.doi.org/10.1007/s12273-013-0162-3>. URL <http://escholarship.org/uc/item/4db4q37h>. [p342, 343, 344]
- M. Schweiker and A. Wagner. A framework for an adaptive thermal heat balance model (athb). *Building and Environment*, 94:252 – 262, 2015. ISSN 0360-1323. doi: <http://dx.doi.org/10.1016/j.buildenv.2015.08.018>. URL <http://www.sciencedirect.com/science/article/pii/S0360132315300998>. [p341, 342, 343, 346]
- M. Schweiker and A. Wagner. Exploring potentials and limitations of the adaptive thermal heat balance framework. In *Proceedings of 9th Windsor Conference: Making comfort relevant Cumberland Lodge, Windsor, UK*, 2016. [p341, 342, 343, 347]
- M. Schweiker, X. Fuchs, S. Becker, M. Shukuya, M. Dovjak, M. Hawighorst, and J. Kolarik. Challenging the assumptions for thermal sensation scales. *Building Research & Information*, 2016a. doi: 10.1080/09613218.2016.1183185. [p341]
- M. Schweiker, J. Kolarik, M. Dovjak, and M. Shukuya. Unsteady-state human-body exergy consumption rate and its relation to subjective assessment of dynamic thermal environments. *Energy and Buildings*, 116:164 – 180, 2016b. ISSN 0378-7788. doi: <http://dx.doi.org/10.1016/j.enbuild.2016.01.002>. URL <http://www.sciencedirect.com/science/article/pii/S0378778816300020>. [p343, 344]
- M. Shukuya. Exergy concept and its application to the built environment. *Building and Environment*, 44(7):1545 – 1550, 2009. ISSN 0360-1323. doi: <http://dx.doi.org/10.1016/j.buildenv.2008.06.019>. URL <http://www.sciencedirect.com/science/article/pii/S0360132308001637>. The 6th International Conference on Indoor Air Quality, Ventilation & Energy Conservation in Buildings (IAQVEC 2007), Sendai, Japan, 28-31 October, 2007. [p341, 342]
- A. Simone, J. Kolarik, T. Iwamatsu, H. Asada, M. Dovjak, L. Schellen, M. Shukuya, and B. W. Olesen. A relation between calculated human body exergy consumption rate and subjectively assessed thermal sensation. *Energy and Buildings*, 43(1):1–9, 2011. ISSN 0378-7788. doi: DOI:10.1016/j.enbuild.2010.08.007. [p343]
- M. Sokolova and G. Lapalme. A systematic analysis of performance measures for classification tasks. *Information Processing & Management*, 45(4):427–437, 2009. [p346]
- R. Yao, B. Li, and J. Liu. A theoretical adaptive model of thermal comfort - Adaptive Predicted Mean Vote (aPMV). *Building and Environment*, 44:2089–2096, 2009. [p342, 343]

Marcel Schweiker  
Karlsruhe Institute of Technology, Building Science Group  
Englerstr. 7, 76131 Karlsruhe  
Germany  
[marcel.schweiker@kit.edu](mailto:marcel.schweiker@kit.edu)